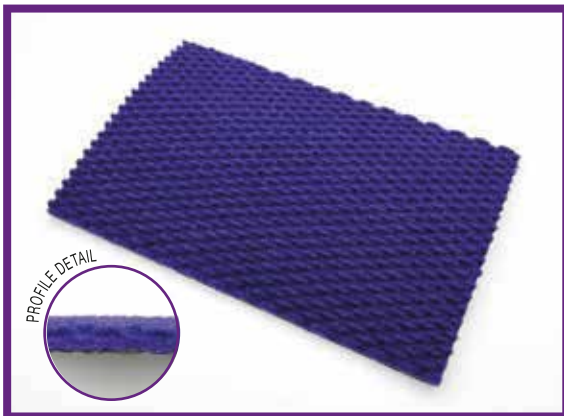


Synthetic mats

## COCCO SINTETICO KIKO



SUGGESTED  
LOCATION

INDOOR

COVERED  
OUTDOOR

OUTDOOR

STRENGTHS

- Scraping and first drying action
- UV rays resistant
- Wide range of colours



Mat.en needle-punches mat synthetic coir, rice grain appearance.  
100% PP outdoor fiber high walking resistance Class 33 Certificate.  
Bottom in anti-slip latex.  
Thickness 12 mm c.a.

Overall thickness	12 mm
Weight	3 kg/m <sup>2</sup>
Roll sizes	23 x 2 ml c.a. (available welding)
Number of colors	15
Fleece	100% PP UV 1850 gr/m <sup>2</sup>
Bottom	Anti-slip latex
Certificazioni	<ul style="list-style-type: none"><li>• Certificate of quality ISO 9001-2015</li><li>• Class 33 Certificate</li></ul>

### CLEANING AND MAINTENANCE

Synthetic coir mats are loose lay and can be washed with water and specific degreaser (purchasable on [www.mat-en.com](http://www.mat-en.com)).

It's recommended the daily cleaning with vacuum cleanser or brush and to avoid to wisk them. It's recommended to pay more attention in case of carpets with PVC ramps or welds of several pieces.

The use of water jets and Vaporella is not recommended. Is possible sanitize the mat with specific products purchasable on [www.mat-en.com](http://www.mat-en.com).

### ACCESSORIES

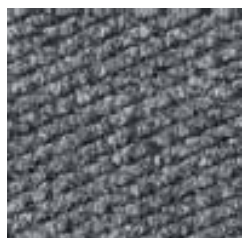
Containment frame in: aluminium and steel

Anodized aluminium wire cover

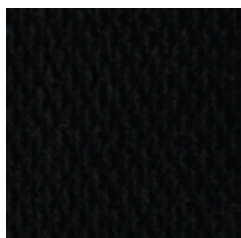
Anti-stumbling trailerable Pvc ramp

Extended foam mat 5 and 10 mm

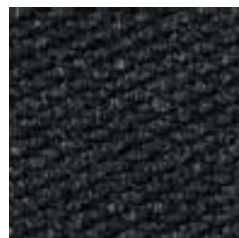
## Color Gamme



K2



K5



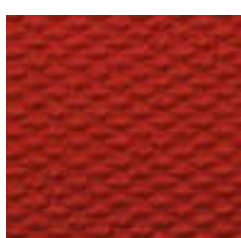
K6



K7



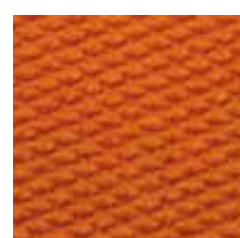
K10



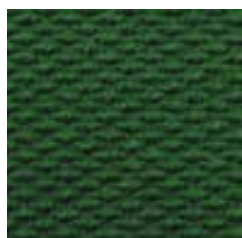
K13



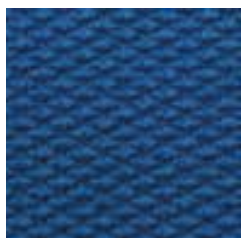
K16



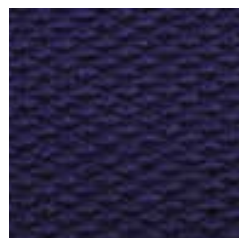
K17



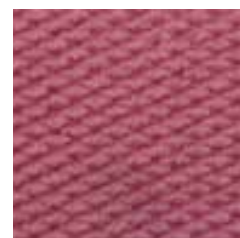
K19



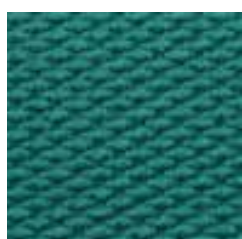
K21



K26



K27



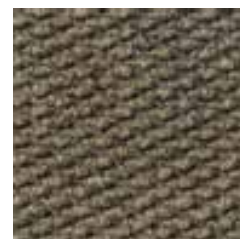
K28



K29



K30



K31